



Winsham-in the county of Somerset

A rural parish which includes the hamlets of Ammerham, Bridge, Leigh, Purtington, Street and Whatley at the southern tip of beautiful Somerset

The Spring theme banner 'Spring in the Valley' was created by Deborah Harris.

Spring

Loveliests of trees, the cherry now
Is hung with bloom along the bough,
And stands about the woodland ride
Wearing white for Eastertide.

A.E. Housman (1859-1936)

Hi all,

Not a lot to tell you that's new this week. New events have gone a bit quiet, but I hope the e-letter will provide you with useful reminders. Of course, the Community Facebook page is always showing something fresh, and particularly new readers of the e-letter may find it worthwhile to look at the Jubilee Hall Bookings programme for April-see the link below. This page is renewed each month by Sandy Wells and contains the detail of the months bookings. This can be useful; it shows how heavily the hall is booked, while giving the names of the organisations and groups using it. Many of these organisations do not often appear in the e-letter, so it gives a good picture of what is available.

While on the topic of organisations using the Jubilee Hall and its excellent facilities, the short-mat bowling club is embarking on its second year of the Coronation Cup competition, and I will report on the result when it is known. Incidentally, they could use a few more members, so if you do not have much going on a Friday afternoon, why not go along and try your hand. You will be made most welcome.

Yesterday, Friday 26th the Memorial Service for Keith Portsmore was held in St. Stephen's. Sadly, Jan and I were not able to make it due to an urgent medical appointment that could not be postponed. However, everyone I have spoken to has told me what a lovely service was held, remarking often on the lovely singing by the

combined Joint Benefice choir and the address given by the Rev. Philip Butcher. St. Stephen's was packed as was the Wake held in the Jubilee Hall afterwards-well over a hundred people came to pay their last respects and comfort Anne and her family. Also, an illustration, as if one was needed, of the importance of the parish church to our community.

All the rest can be found below in the tabulated section-please remember the WHS Plant Sale next Saturday! And remember to refresh your memory of events at the Winsham Community Club in May.

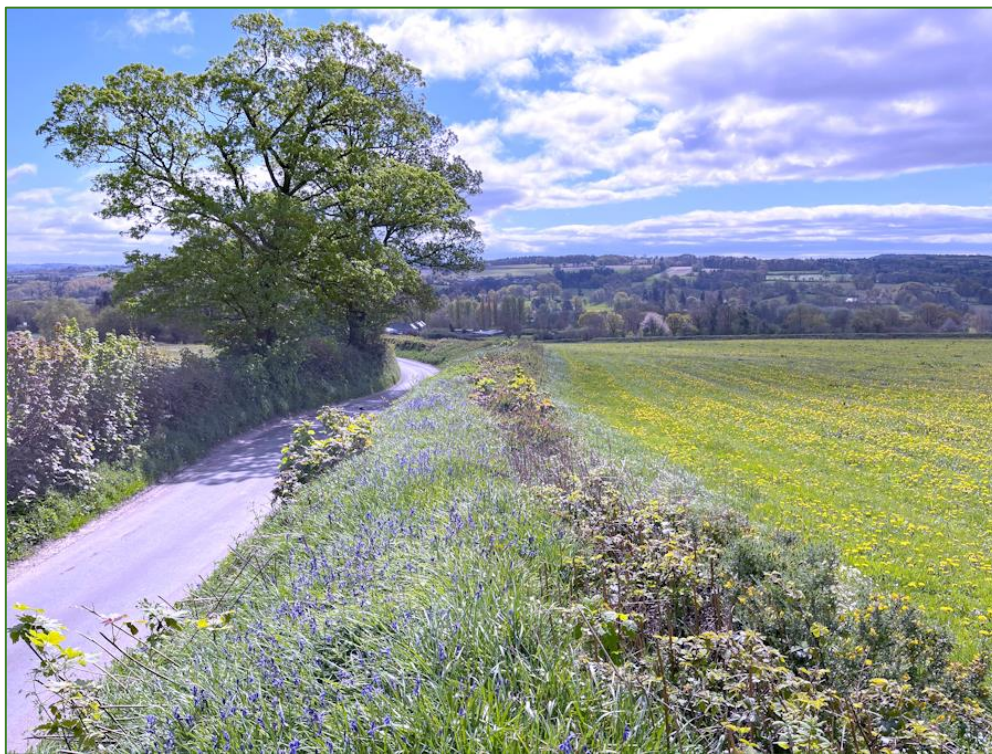
Keep warm! Stay happy!

John

WINSHAM E-LETTER

No: 741

27th April 2024





*Henk Beentje took this lovely picture of Bluebells while walking along Cow Down Road this week.
Thank you Henk for sharing it with us.*

PARISH EVENTS

<p><i>Forthcoming events and reminders! New announcements, etc. in red</i></p>		
<p>Winsham Parish Web Site</p>	<p>HEADLINES Always worth a visit. Most, but not everything, makes the E-letter or Facebook!</p>	<p><u>Click HERE</u></p>
<p>Jubilee Hall Management Committee</p>	<p>Jubilee Café 11.00am Thursday, 16th May</p>	<p><u>Click HERE for results of Lottery 1st Qtr. Draw</u></p>
<p>Winsham Hort Soc.</p> <p>NEXT SATURDAY! Don't forget!!</p>	<p>Message from new Chairman</p> <p style="text-align: center;">*</p> <p>Plant Sale-4th May, Jubilee Hall</p>	<p><u>Click HERE</u></p>
<p>Jubilee Hall Bookings for April/May</p>	<p>View future bookings to see groups that may be of interest to you.</p>	<p><u>Click HERE</u></p>
<p>Ki Aikido Club</p>	<p>Message from Eileen Honeybun</p>	<p><u>Click HERE</u></p>
<p>Winsham Poetry Reading Group</p>	<p>Wednesday 1st May</p>	<p><u>Click HERE</u></p>
<p>Somerset Libraries</p>	<p>Home Library Service</p>	<p><u>Click HERE</u></p>
<p>St. Margarets Hospice</p>	<p>Glorious Gardens launched for 2024</p>	<p><u>Click HERE</u></p>
<p>Winsham Parish Calendar 2025</p>	<p>Your pictures are needed!</p>	<p><u>Click HERE</u></p>
<p>Winsham Horticultural Society</p>	<p>Programme of talks and events for 2024</p>	<p><u>Click HERE for details</u></p>

<p style="text-align: center;">St. Stephen's</p> 	<p style="text-align: center;">St. Stephens Services, and most recent Rector's letter</p> <p style="text-align: center;">*</p>	<p style="text-align: center;"><u>Click HERE</u></p>
<p style="text-align: center;">Winsham Community Club</p> 	<p style="text-align: center;">Forthcoming events For MAY</p>	<p style="text-align: center;"><u>Click HERE...</u></p> <p style="text-align: center;">...and scroll down for details of individual events</p>
<p style="text-align: center;">Winsham Art Club</p>	<p style="text-align: center;">Details of next workshop, and other Spring workshops</p>	<p style="text-align: center;"><u>Click HERE</u></p>
<p style="text-align: center;">Winsham Walkers</p>	<p style="text-align: center;">2024 Walks have commenced & report on last walk-March</p>	<p style="text-align: center;"><u>Click HERE</u></p>
<p style="text-align: center;">JUBILEE HALL SHORT MAT BOWLING CLUB</p>	<p style="text-align: center;">Jubilee Hall, every Friday, 2.00pm New members welcome.</p>	<p style="text-align: center;"><u>Click HERE</u></p>
<p style="text-align: center;">JHMC</p>	<p style="text-align: center;">Table Tennis at the Jubilee Hall Wednesday Mornings- 10.am-11.00am</p>	<p style="text-align: center;"><u>Click HERE for details</u></p>
<p style="text-align: center;">Pilates Classes</p>	<p style="text-align: center;">Weekly Pilates Classes Starting 10.15am every Monday Jubilee Hall First Class Free</p>	<p style="text-align: center;"><u>Click HERE</u></p>

<p>Hatha Yoga Classes</p>	<p>YOGA in the Jubilee Hall Tuesdays 10.30-11.30am</p>	<p><u>Click HERE for details</u> <u>First session free!</u></p>
<p>Winsham Ki Aikido Club</p>		<p><u>Click HERE</u></p>
<p><i>Community Information</i> <i>-new in red</i></p>		
<p>Winsham Parish Council Web Site</p>	<p>Well worth of visit to see the detail of the Winsham Parish Council's work, with links to Somerset County Council unified services.</p>	<p><u>Click HERE</u></p>
<p>Useful for new residents and visitors</p>	<p>'Welcome to Winsham' An online guide for visitors and people new to the parish</p>	<p><u>Click HERE</u></p>
<p><i>Village Interest Groups- New/coming week-in red</i></p>		
<p>Neighbourhood Watch Up-dated 8th December</p>	<p>Items relating to security over the Christmas * Important information about how you can play a part in defeating Spammers and Phishers!</p> <p>All well worth reading-crime is everywhere, even in Winsham! Be vigilant</p>	<p><u>Click HERE</u></p>

	<p style="text-align: center;">The Bell</p>	<p style="text-align: center;"><u>Click HERE</u></p>
<p style="text-align: center;">Winsham Parish Council</p>		<p style="text-align: center;"><u>Click HERE</u></p>
<p style="text-align: center;">Catholic Parish of The English Martyrs, Chard</p>	<p style="text-align: center;">New link to web site</p>	<p style="text-align: center;"><u>Click HERE</u></p>
<p style="text-align: center;">Winsham Market Place</p>		
	<p style="text-align: center;">New Winsham Market Place</p> <p style="text-align: center;">Support your local suppliers of goods and services.</p> <p style="text-align: center;">See the new & regular advertisers.</p>	<p style="text-align: center;"><u>Click HERE</u></p>
<p style="text-align: center;">WINSHAM WEB MUSEUM</p>	<p style="text-align: center;">WINSHAM WEB MUSEUM</p>	<p style="text-align: center;">WINSHAM WEB MUSEUM</p>
<p style="text-align: center;">NEW!</p>	<p style="text-align: center;">Addition to Loaring Family section by Jill Russell</p>	<p style="text-align: center;"><u>Click HERE</u></p>
<p style="text-align: center;">Changes to Home Page</p>	<p style="text-align: center;">Changes to Home Page</p>	<p style="text-align: center;"><u>Click HERE</u></p>
<p style="text-align: center;">Winsham Web Museum</p>	<p style="text-align: center;">Winsham and the Covid- 19 Pandemic</p>	<p style="text-align: center;"><u>Click HERE</u></p>
<p style="text-align: center;">Winsham Steet Fairs</p>	<p style="text-align: center;">1984-2022</p>	<p style="text-align: center;"><u>Click HERE</u></p>
<p style="text-align: center;">The Queen's Coronation Diamond Jubilee 2013 and the Diamond Jubilee of her accession in 2012</p>	<p style="text-align: center;">Enjoy a trip down Memory Lane!</p>	<p style="text-align: center;"><u>Click HERE</u></p>
<p style="text-align: center;">Winsham Shop and Post Office</p>	<p style="text-align: center;">The History of Winsham Shop and Post Office from 1850</p>	<p style="text-align: center;"><u>Click HERE</u> for more information, and link to the new site</p>

<p>Nature Lovers Guide to Winsham</p>	<p>Visit accounts of Winsham Flora and Fauna , dating back to 2002.</p> <p>Botany walks with Henk Beentje.</p> <p>.....</p> <p>Wildlife Diaries 2016-2020 Contributed by Liz Earl</p> <p>.....</p> <p>Butterfly Diary 2019 Contributed by Liz Earl & Henk Beentje</p> <p>.....</p> <p>Paul Smith's 'Bugs 'n' Bees' Index</p> <p>.....</p> <p>Natural Winsham Fossils, Flora & Fauna</p> <p>.....</p> <p>Paul Smith's reflections on farming, and his experience as a farmer in Winsham since 1921 until his passing in 2007. A unique record</p>	<p><u>Click HERE</u></p> <p><u>Click HERE</u></p> <p><u>Click HERE</u></p> <p><u>Click HERE</u></p> <p><u>Click HERE</u></p> <p><u>Click HERE</u></p>
<p><i>Miscellaneous</i></p>		
<p>Somerset Museums UPDATED-a really useful web site.</p>	<p>Gives you details of most of the Museums in Somerset.</p>	<p><u>Click HERE</u></p>

Take a picture of your pet-you never know when you will wish you had!

The Winsham e- letter will always help find missing pets.

[Contact Winsham E-Letter](#) Click [HERE](#) to unsubscribe.

